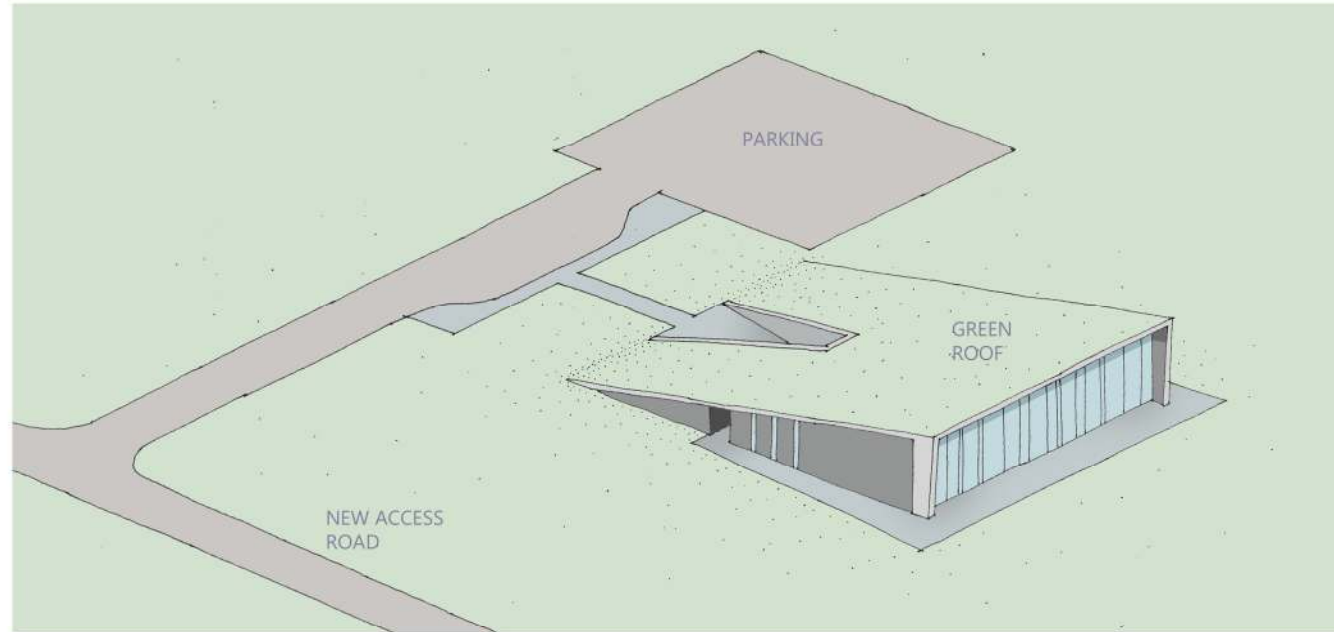


FLOOR PLAN AS PROPOSED



3D VIEW

THE LOCC

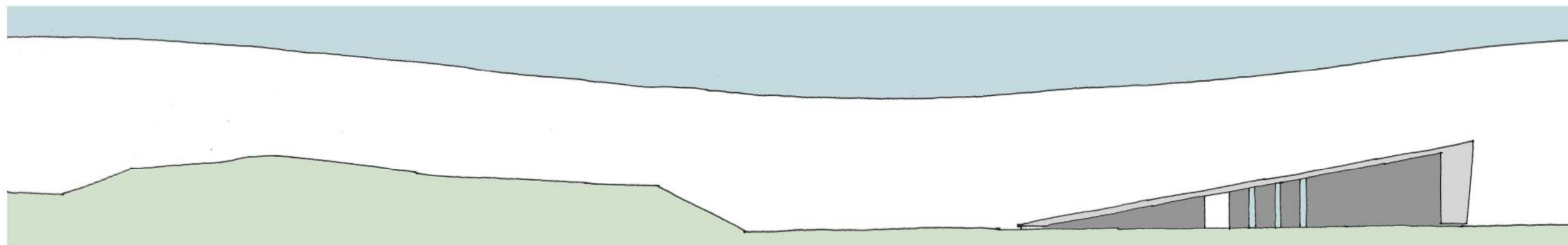
THE 'LAUNCH OPERATIONS CONTROL CENTRE' IS FOR APPROXIMATELY 15 - 20 STAFF WHO WILL BE RESPONSIBLE FOR THE LAUNCH.

THE LOCC HAS BEEN POSITIONED OUTWITH THE 1.8km LAUNCH EXCLUSION ZONE.

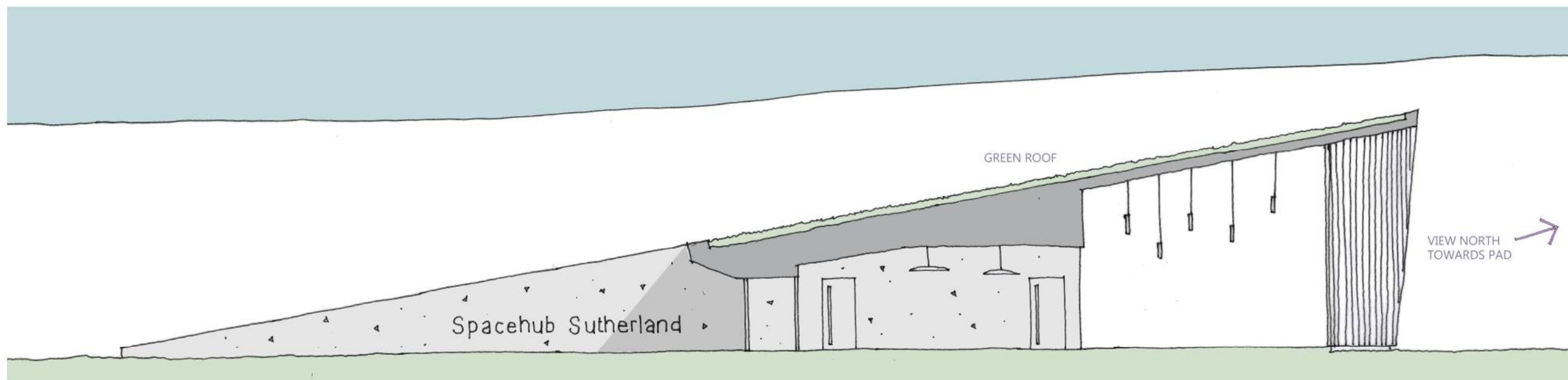
VISUAL ANALYSIS OF THE SITE HAS SOUGHT TO MINIMISE THE VISUAL IMPACT OF THE LOCC FROM THE SOUTH OF THE SITE BY MEANS OF A GREEN SLOPING ROOF, INTEGRATING THE BUILDING INTO THE LANDSCAPE.

THE GLAZED NORTH FACADE WILL AFFORD VIEWS TOWARDS THE LAUNCH PAD FROM THE CONTROL CENTRE.

A HIDDEN DOOR IN THE LANDSCAPE UNVEILING A HIGH-TECH WORLD BEYOND.....



ELEVATION AS PROPOSED



SECTION AS PROPOSED

