

# Highlands and Islands Enterprise Community Broadband Scotland

**STATE AID PUBLIC CONSULTATION**

**Lunan Valley**

**Monday 30<sup>th</sup> January 2017**

Version 2: Updated 24<sup>th</sup> February 2017, 1 postcode change in table 1



## **New procurements to further extend coverage of Next Generation Access (NGA) Broadband across Community Broadband Projects within Scotland.**

**Update Note:** The Lunan Valley Community Broadband area was part of a combined State Aid Public Consultation conducted by CBS between 7<sup>th</sup> October 2016 to 11<sup>th</sup> November 2016. However, since then, a small number of additional postcodes have been identified which would benefit from being part of the intended upcoming procurement. These postcodes are believed to be all NGA white and therefore eligible. CBS is opening this new State Aid Public Consultation targeted at the Lunan Valley Community Broadband project to seek feedback from all interested stakeholders on the extended project scope.

## **1. INTRODUCTION AND BACKGROUND**

The Scottish Government has set ambitious policy objectives aimed at delivering world class digital infrastructure across Scotland by 2020.

As a key first step, over £400m is being invested in the Digital Scotland Superfast Broadband (DSSB) programme that is extending next generation broadband infrastructure into non-commercial areas. Alongside commercial rollout, the DSSB programme will extend access to next generation broadband to 85% of premises by 2015/16 and at least 95% of premises across Scotland by 2017/18.

The DSSB programme is being delivered through two regional projects: one covering the Highlands and Islands; the other covering the rest of Scotland. Both projects were procured in 2013, by Highlands and Islands Enterprise and the Scottish Government respectively, with BT the successful bidder for both.

The Scottish Government has also established Community Broadband Scotland (CBS), to support the development of community-led schemes in those areas least likely to have a Next Generation Access solution delivered by the DSSB programme. The Scottish Government has committed £7.5 million to CBS to March 2018. In addition, £9 million has been allocated from the 2014-20 Scottish Rural Development Programme (SRDP) to support broadband delivery in the most rural communities.

CBS is working with a number of communities that are unlikely to benefit from the main programme, and assisting them as they move towards formal procurement of broadband solutions. This is likely to result in a number of new regional procurement opportunities, as the reach of the main DSSB programme becomes clear. These projects will be taken forward, utilising existing CBS resources and the £9 million from the SRDP.

The objective of all Community Broadband Projects in scope of this State aid Public Consultation is to extend the delivery of Next Generation Access broadband to all parts of the community, within the limitations of the intervention area: i.e. to deliver a Next Generation Access Solution (with download speeds of more than 30 Mbps) to 100% of premises in the project footprint.

BDUK has been working with the European Commission to approve the terms of a new National Broadband Scheme for the United Kingdom (referred to hereafter as the 2016 NBS) which was announced on 26th May 2016. All Community Broadband Projects in

scope of this State aid Public Consultation intend to conduct further procurements under the 2016 NBS.

## 2. MARKET ENGAGEMENT AND ANALYSIS OF EXISTING COVERAGE

The base mapping for the projects has been developed utilising information obtained by the Scottish Government in an Open Market Review (OMR) and verified via a State aid Public Consultation that closed in December 2014. This OMR was used to establish current and planned (next 3 years) commercial coverage of broadband services across Scotland by existing, and any prospective, broadband infrastructure providers.

The Open Market Review process is not a specific requirement of the EC Guidelines, but is regarded as good practice to help inform the definition of the intervention areas prior to a State aid public consultation.

The Scottish Government contacted all known broadband infrastructure operators within Scotland and other providers known to have (or potentially having) plans to deploy new networks across the UK with a formal request for information. The OMR and State aid Public Consultation was publicised through a notification on the Scottish Government's website. Operators were requested to provide information on their existing and planned NGA broadband infrastructure, and supporting evidence to substantiate existing and/or planned qualifying coverage.

Discussions on the proposed areas for intervention were undertaken with the Scottish Government prior to this consultation to confirm that the areas targeted are all believed to be NGA white.. **For the avoidance of doubt all postcodes highlighted as being in scope in the detailed maps (Annex 1) are considered to be NGA white and eligible for intervention.**

This State aid Public Consultation sets out that proposed intervention area, so as to enable all interested stakeholders (including the public, businesses, internet service providers and broadband infrastructure operators) to comment on the proposals. In particular, this provides an opportunity for broadband infrastructure operators to review CBS's mapping to ensure that it correctly represents the information provided by them to the Scottish Government in the course of the OMR, and that this information is still valid.

Upon completion of this State aid public consultation and review of all comments received, a final intervention area will be defined. The State aid requirements which guide the determination of an intervention area for the purpose of public sector intervention in the delivery of broadband infrastructure are provided in section 3 below.

All responses to the public consultation will be carefully considered and where necessary will be incorporated into the final map of the intervention area. The final intervention area map and a summary report confirming details of the changes made to the proposed intervention area will be published on the CBS website shortly after the close of the consultation period. Where responses to the consultation are received, CBS will respond to these and provide an explanation of how the information submitted has been treated.

The finalised intervention area will then be submitted to BDUK's National Competence Centre (NCC) for approval against the State aid Framework.

### **3. STATE AID FRAMEWORK AND RULES**

This section provides a brief introduction to the State Aid Framework for the purpose of informing responses to the public consultation. Respondents may wish to obtain their own professional/legal advice on the application of the State Aid Framework and rules that relate to this proposal.

The European Commission has published '*EU Guidelines for the application of State aid rules in relation to the rapid deployment of broadband networks*' (2013/C 25/01)<sup>1</sup>. These guidelines summarise the principles of the Commission's policy in applying the State aid rules of the Treaty to measures that support the deployment of broadband networks, and seek to ensure that State aid schemes for broadband are well-designed so that they target market failures and minimise negative effects on competition.

The guidelines require public interventions to be targeted so as to limit the risk of crowding out private investments, of altering commercial investment incentives and ultimately of distorting competition.

Planned public interventions can seek State aid approval directly from the Commission, or (as is the case with this proposal) seek clearance under a national scheme which has been pre-approved by the Commission.

Projects under the 2016 NBS will need to demonstrate their State aid compliance (in accordance with the terms of the scheme) in order to receive clearance from BDUK's National Competence Centre.

The Commission's guidelines distinguish between two types of broadband networks, namely basic broadband and NGA networks.

Basic broadband networks are generally those based on currently widely-deployed technologies such as fixed wired telephony networks (using ADSL/ADSL2+ technologies), non-enhanced cable TV networks (e.g. DOCSIS 2.0), mobile networks (2G/3G (UMTS)), some fixed wireless access (FWA) networks, and satellite networks.

NGA networks rely wholly or partly on optical elements (optical fibre) and are capable of delivering an enhanced broadband capability compared to existing basic broadband networks. Current qualifying NGA technologies are fibre-based networks (FTTx), advanced upgraded cable networks (DOCSIS 3.0) and certain advanced wireless access networks capable of delivering reliable high speeds.

---

<sup>1</sup> <http://eur-lex.europa.eu/LexUriServ/LexUriServ.do?uri=OJ:C:2013:025:0001:0026:en:PDF>

Guidance on the characteristics of qualifying NGA technologies is available from BDUK.<sup>2</sup>

The Commission's guidelines also require that public intervention should be able to ensure a 'step change' in broadband availability. This is demonstrated by:

- Significant new investments in the broadband network;
- The new infrastructure brings significant new capabilities to the market in terms of broadband service availability and capacity, speeds and competition<sup>3</sup>;

The 'step change' in broadband availability shall be compared to that of existing as well as concretely planned networks.

The Commission's guidelines also distinguish between geographic areas on the basis of their existing or planned broadband infrastructure:

- 'White' areas are those in which there is no qualifying broadband infrastructure and none is likely to be developed within 3 years;
- 'Grey' areas are those where only one network operator is present or is to be deployed within the coming 3 years; and
- 'Black' areas are those where at least two networks of different operators exist or will be deployed in the coming 3 years.

This geographic mapping of White/Grey/Black areas is carried out separately in relation to basic broadband and NGA networks. NGA networks are mapped on the basis that, amongst other things, they have substantially higher upload speeds (compared to basic broadband networks)<sup>4</sup> and are able to deliver broadband services at an access (download) speed of at least 30Mbps. Basic broadband for the purposes of the geographic mapping is based on the delivery of broadband services (download) speeds of more than 2Mbps and less than 30Mbps.

Public intervention can only take place in white NGA areas under the 2016 NBS. White NGA areas are those in which there are no NGA networks and none is likely to be developed within the next 3 years.

## 4. PROPOSED INTERVENTION

The Community Broadband Project in scope of this State aid Public Consultation compromise a total of **387** premises as identified from Ordnance Survey AddressBase Plus (Epoch 40 – April 2016 release) and these have all been identified as NGA White as

---

<sup>2</sup>

[https://www.gov.uk/government/uploads/system/uploads/attachment\\_data/file/379762/State\\_aid\\_-\\_Guidance\\_-\\_Technology\\_Guidelines.pdf](https://www.gov.uk/government/uploads/system/uploads/attachment_data/file/379762/State_aid_-_Guidance_-_Technology_Guidelines.pdf)

<sup>3</sup> See Footnote 66 of the Commission's Guidelines - this sets out that the subsidised network should be pro-competitive (i.e. allow for effective access at different levels of the infrastructure).

<sup>4</sup> Substantially higher upload speeds means at least a doubling of the maximum upload speed available on current generation access network(s) for given 'up to' packages available on basic broadband networks in the relevant intervention area.

stated in Section 2. Table 1 provides a breakdown of the number of premises encompassing the in-scope postcodes.

Appendix 2 lists the premises in each postcode that form part of the proposed intervention area for the broadband projects in scope of this State aid Public Consultation.

Area	Postcode	Residential Premises	Non residential Premises	Total Premises	Correction 24/02/17
Amulree	PH80EH	10	0	10	
Amulree	PH80DB	5	0	5	
Amulree	PH80DE	7	0	7	
Amulree	PH80EG	3	0	3	
Amulree	PH80EQ	2	0	2	
Amulree	PH80DA	9	0	9	
Amulree	PH80BZ	5	0	5	
Amulree	PH80EE	9	0	9	
Amulree	PH80EB	9	0	9	
Amulree	PH80BY	3	0	3	
Amulree	PH80EA	6	0	6	
Amulree	PH80BX	10	0	10	
Amulree	PH80EF	0	1	1	
Amulree	PH80BT	5	0	5	
Amulree	PH80BU	1	1	2	
Amulree	PH80DY	31	2	33	
Amulree	PH80ED	4	0	4	
Amulree	PH80BS	7	0	7	
Amulree	PH80BP	8	0	8	
LunanValley	PH80EU	6	0	6	
LunanValley	PH80HH	5	3	8	
LunanValley	PH80HP	9	0	9	
LunanValley	PH80HQ	11	1	12	
LunanValley	PH80RF	1	0	1	
LunanValley	PH80HF	4	0	4	
LunanValley	PH80RE	10	1	11	
LunanValley	PH80HA	24	1	25	
LunanValley	PH80EZ	5	0	5	
LunanValley	PH80HJ	5	0	5	
LunanValley	PH80EY	8	0	8	
LunanValley	PH80HE	8	0	8	
LunanValley	PH80HD	3	0	3	
LunanValley	PH106SW	5	0	5	
LunanValley	PH80HB	5	0	5	
LunanValley	PH106SP	13	0	13	
LunanValley	PH80HN	5	0	5	

LunanValley	PH80EX	1	0	1	
LunanValley	PH106RF	4	0	4	
LunanValley	PH106RB	3	0	3	Added to scope
LunanValley	<del>PH106RD</del>	<del>15</del>	0	<del>15</del>	Removed from scope
LunanValley	PH106RG	17	0	17	
LunanValley	PH106RJ	7	0	7	
LunanValley	PH106SG	13	1	14	
LunanValley	PH106SJ	6	0	6	
LunanValley	PH106RE	3	0	3	
LunanValley	PH26EH	6	0	6	
LunanValley	PH106QZ	4	0	4	
LunanValley	PH106SQ	3	0	3	
LunanValley	PH106RL	1	0	1	
LunanValley	PH26EJ	4	0	4	
LunanValley	PH106RN	1	0	1	
LunanValley	PH26EQ	5	0	5	
LunanValley	PH106QY	4	0	4	
LunanValley	PH106RQ	5	0	5	
LunanValley	PH106SH	1	0	1	
LunanValley	PH106SL	16	0	16	
LunanValley	PH106RH	1	0	1	
LunanValley	PH106SN	5	0	5	
LunanValley	PH106SE	4	1	5	
<b>Totals</b>		<b>375</b>	<b>12</b>	<b>387</b>	

Table 1: Lunan Valley Community Broadband Project Intervention Area

It should be noted that whilst this consultation includes for the mapping of basic coverage, it is not the intention of this procurement to undertake the deployment of basic broadband technologies. The intention is that bidders will be provided with details of all the areas where there is basic broadband so that any overbuild by an NGA solution under the 2016 NBS, will provide those premises with over 30Mbps or at least a doubling of existing speeds. Where the doubling is not possible, there will be an obligation on the procured supplier to ensure the design was optimized to limit the overlap of existing basic broadband network.

### **New Procurement**

CBS in conjunction with INCA held market engagement and supplier warming in January 2016 and through this engagement and subsequent supplier feedback, has confirmed its preference for the use of gap funding as a preferred delivery model, however, alternative models may be considered by the community groups as contracting entities.

The procurement will be carried out to meet the specific requirements of the Public Contracts (Scotland) Regulations 2015 and the European Union Public Procurement directives. The tender is likely to utilise the Open or Competitive Procedure and will be

conducted in a transparent and non-discriminatory manner to meet the requirements of the NBS 2016.

The procurement will be designed in such a way that it meets the specific requirements of the NBS 2016 to optimise the number and quality of bidders by reducing any hurdles to participation in procurements by smaller suppliers, and to encourage collaboration between operators so that a range of appropriate solutions can be brought forward. This was also a key objective of the market engagement exercise and, when the procurement is launched, the white areas may be sub-divided into a number of lots or areas to promote this objective.

The procurement will aim to deliver NGA broadband infrastructure to 100% of the intervention area.

CBS will provide support throughout the procurement process for the project with a view to processing a capital grant application of £450,000. CBS is currently investigating the possibility of leading the procurement on behalf of the community. However, these discussions are not expected to complete in time for procurement in which case Lunan Valley Community Broadband Ltd (LVCB) will lead the procurement and will seek to maximise private sector funding to minimise public sector grant support.

## **5. TIMESCALES**

This consultation will be open until Thursday 2<sup>nd</sup> March 2017.

Once the State aid public consultation is complete and the intervention area of the Community Broadband Projects have been formalised by CBS, tenders will be launched for suppliers to bid for the opportunity to deliver extended NGA Broadband coverage. The intention is to award contracts to enable the related extended deployment plans for broadband infrastructure in Year 2017.

## **6. STATE AID PUBLIC CONSULTATION**

The EU Guidelines (at paragraph 78) and the 2016 NBS set out the requirements to hold a public consultation in order to validate the intervention area mapping by allowing all interested stakeholders an opportunity to comment on the planned aid measure.

The purpose of this document is to fulfil those requirements by publishing a description of the proposed aid measure, and seeking feedback from all interested stakeholders. The mapping for basic and NGA broadband are shown in the attached maps (Appendix 1).

The attached map of the NGA broadband intervention area relies on the definitions of white, grey and black areas, as set out in the EU Guidelines (and as summarised above in section 3).

This State aid public consultation and the proposed NGA broadband intervention area maps are available to all stakeholders on the CBS website at <http://www.hie.co.uk/community-support/community-broadband-scotland/updates/state->



[aid.html](#) and will also be available via BDUK's website at [BDUK Table of local broadband projects](#).

The final public consultation report will be published on the CBS website as detailed above.

## 7. RESPONDING TO THIS STATE AID PUBLIC CONSULTATION

CBS is requesting information and supporting evidence in relation to the presence of basic NGA broadband infrastructure within the intervention area and wish to hear from all relevant stakeholders (including residents, businesses as well as broadband infrastructure operators), particularly in relation to areas to be targeted as part of the NGA intervention area shown in Appendix 1.

Note: For the avoidance of doubt, there is no need to respond to this public consultation if you have no comment to make.

For residents and businesses, where this relates to the ability to receive an NGA service, any information provided in response to this State aid public consultation should as a minimum include (but need not be limited to) the address of the property or area that the submission relates to and the nature of the concern.

If the response is from an infrastructure provider and comments on the white, grey and/or black classifications within the attached maps or data, or on the wholesale products to be offered via the subsidised network, then the submission should also include the specific information set out in Section 8.

**A full Public Consultation response template incorporating a spreadsheet with all of the premises within the proposed area will be released to providers once the attached Ordnance Survey One Scotland Mapping Agreement (OSMA) End User/ Contractor licence has been signed and returned.**

This is a requirement of the HIE license with Ordnance Survey in order to share the base data with suppliers. Please ensure that the relevant company details are provided where highlighted in the Contractor license document before returning.

For all submissions, CBS would be grateful if you could confirm in your submission the following:

- Your organisation's name (if applicable)
- Your organisation's address (if applicable)
- Your name
- Position
- Contact telephone number
- Email Address

CBS also requests confirmation from an authorised signatory that the information provided is suitably accurate and up to date.

**Please send your response to arrive no later than 5pm on 2<sup>nd</sup> March 2017 to:**

**By email:** [cbs-enquiries@hient.co.uk](mailto:cbs-enquiries@hient.co.uk) (marked "HIE Community Broadband Projects Consultation Response").

Or by post:

Highlands & Islands Enterprise  
Community Broadband Scotland  
An Lòchran,  
10 Inverness Campus,  
Inverness  
IV2 5NA

Please note that the data you provide in your response will be treated as commercially confidential to your organisation. However, it may be necessary to share/some all of your response data with our professional advisers and/or DCMS/BDUK, Ofcom, the BDUK National Competence Centre and the European Commission in the course of seeking State aid approval.

It should also be noted that it is a State aid requirement to use this information to produce State aid maps to define white, grey and black areas for basic and NGA broadband. However, the published maps will show the aggregated White/Grey/Black NGA and Basic Broadband areas, not the data provided on a per-operator basis. The final maps that will be used for procurement purposes will be published shortly after the conclusion of this State aid public consultation and once approved by the BDUK National Competence Centre.

If you have any questions about any of the above, please contact the CBS team by email at: [cbs-enquiries@hient.co.uk](mailto:cbs-enquiries@hient.co.uk)

## **8. INFORMATION REQUESTED**

This section specifies the information you are requested to provide in response to this State aid public consultation in relation to the presence of broadband infrastructure.

CBS is requesting information on, and supporting evidence for, any current or planned (within the next 3 years) investment in broadband infrastructure in the proposed broadband project intervention area, where this may not be already included within the proposed NGA and Basic broadband intervention area maps attached.

For any current or planned coverage not included within the proposed State aid intervention area shown on the attached map, CBS is requesting information on the postcodes, and the number of premises within each postcode, covered (or planned to be covered) by your broadband infrastructure investment. By 'covered' (or 'passed') CBS means that fixed network infrastructure is or will be available to the premises, potentially subject to a final drop connection, or that the premises are able to receive a suitable quality radio signal over the air interface, potentially subject to the installation of a suitable antenna.

Any information provided in response to this State aid public consultation should include, but need not be limited to:

- Detailed maps for NGA broadband showing existing coverage and, separately, planned coverage, for at least the next 3 years;
- Details of premises covered or passed to individual premises level to appropriately define the footprint of operator's coverage or intended coverage (please refer to the Public Consultation Response Template). Confirmation should be provided that fixed network infrastructure is available to the premises, potentially subject to a final drop connection, or that the premises are able to receive a suitable quality radio signal over the air interface (in the case of wireless or satellite coverage), potentially subject to the installation of a suitable antenna;
- A detailed description of the technology solution(s) deployed (or to be deployed) in your broadband infrastructure, demonstrating how they meet the minimum standards as set out in the BDUK NGA Technology Guidelines<sup>5</sup>;
- A description of the services/products currently offered, and separately those services/products to be offered within the next 3 years;
- Installation, annual/monthly subscription, and additional volume or per-service tariffs for those services/products (identifying whether such tariffs are inclusive or exclusive of VAT);
- Upload and download speeds typically experienced by end-users, and how these may vary by factors such as distance, increased take-up or demand, contention, etc.;
- Appropriate indicators of the quality of services (e.g. contention ratios, bandwidth allocation per user, etc.), including any characteristics (e.g. latency, jitter) that are required to support advanced services such as video conferencing or HD video streaming;
- Evidence to substantiate actual or planned coverage claims, including business cases and evidence of available funding to enable plans to be fulfilled;
- Details and planned timing of roll-out of any future investments, including further investments required to cope with future increases in take-up or demand.

Please supplement the required information above with any supporting evidence as you consider appropriate (e.g. links to public websites).

CBS would also be interested to hear the view from operators as to the types of wholesale access products they would like to see offered on any newly created subsidised NGA network infrastructure resulting from any public intervention in the future. CBS believes that this could be a useful market research exercise and the information may inform the intervention design. Please note that Community Groups are not obliged to include for these products to be included in the invitations to tender, unless the access

---

5

[https://www.gov.uk/government/uploads/system/uploads/attachment\\_data/file/379762/State\\_aid\\_-\\_Guidance\\_-\\_Technology\\_Guidelines.pdf](https://www.gov.uk/government/uploads/system/uploads/attachment_data/file/379762/State_aid_-_Guidance_-_Technology_Guidelines.pdf)

product is already required under any State aid Decision<sup>6</sup>. This does not negate the need to allow the access seeker to request new forms of access product through the formal general access provisions under the terms of a future State aid Decision in relation to the provision of subsidised broadband infrastructure.

## 9. NEXT STEPS

Following any responses received to this State aid public consultation by the closing date of 2<sup>nd</sup> March 2017, CBS plans to publish the final intervention area maps shortly after the close of the consultation period.

This will be followed by the launch of tender documentation to Suppliers to bid for the opportunity to fulfil a new contract to deliver the extended coverage.

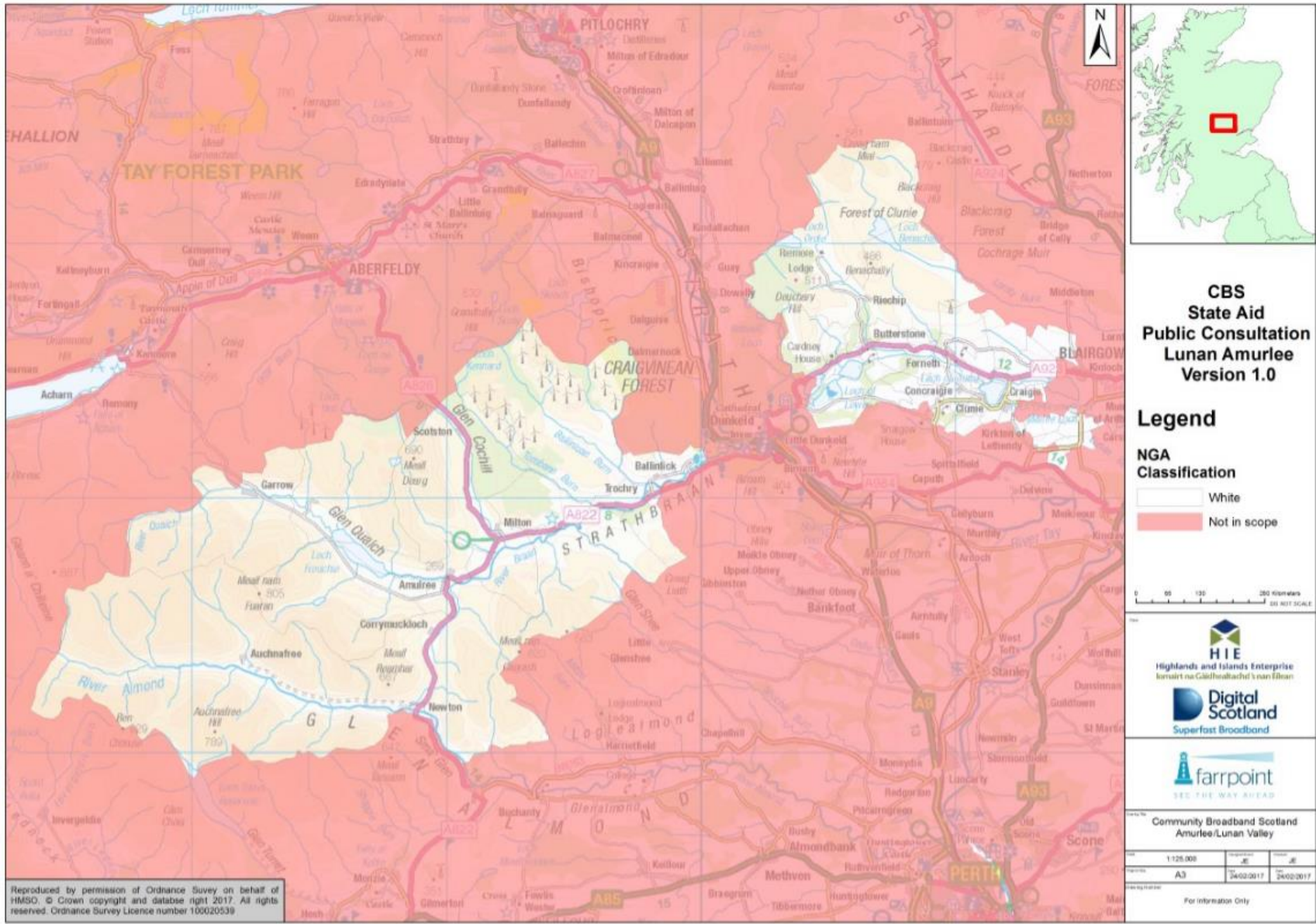
Information about CBS can be found at <http://www.hie.co.uk/community-support/community-broadband-scotland/>.

---

<sup>6</sup> Operators will still be able to request new forms of access products on the subsidised NGA network infrastructure through the formal general access provisions under the terms of a future State aid Decision.

**Appendix 1: (follow on pages):**

BB and NGA maps for in-scope postcodes.



Reproduced by permission of Ordnance Survey on behalf of HMSO, © Crown copyright and database right 2017. All rights reserved. Ordnance Survey Licence number 100020539



**CBS  
State Aid  
Public Consultation  
Lunan Amurlee  
Version 1.0**

**Legend**

**NGA  
Classification**

- White
- Not in scope



**HIE**  
Highlands and Islands Enterprise  
Ionaidh na Gàidhealtachd is nan Eilean

**Digital Scotland**  
Superfast Broadband

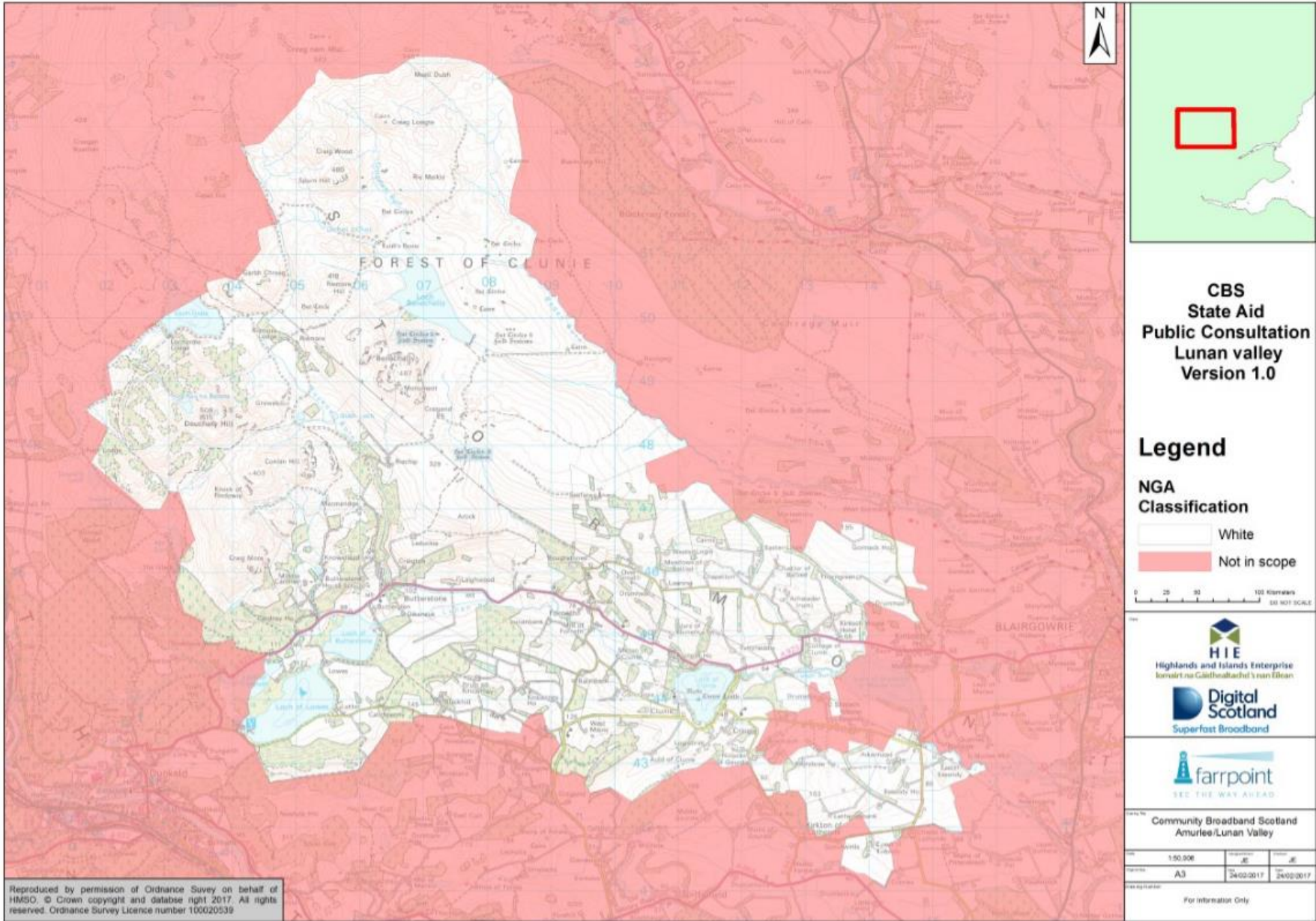
**farrpoint**  
SEE THE WAY AHEAD

Community Broadband Scotland  
Amurlee/Lunan Valley

Scale	1:25,000	Version	1.0
Project No.	A3	Issue Date	24/02/2017
Project Name	Amurlee/Lunan Valley		

For Information Only





**CBS  
State Aid  
Public Consultation  
Lunan valley  
Version 1.0**

**Legend**

**NGA  
Classification**

- White
- Not in scope

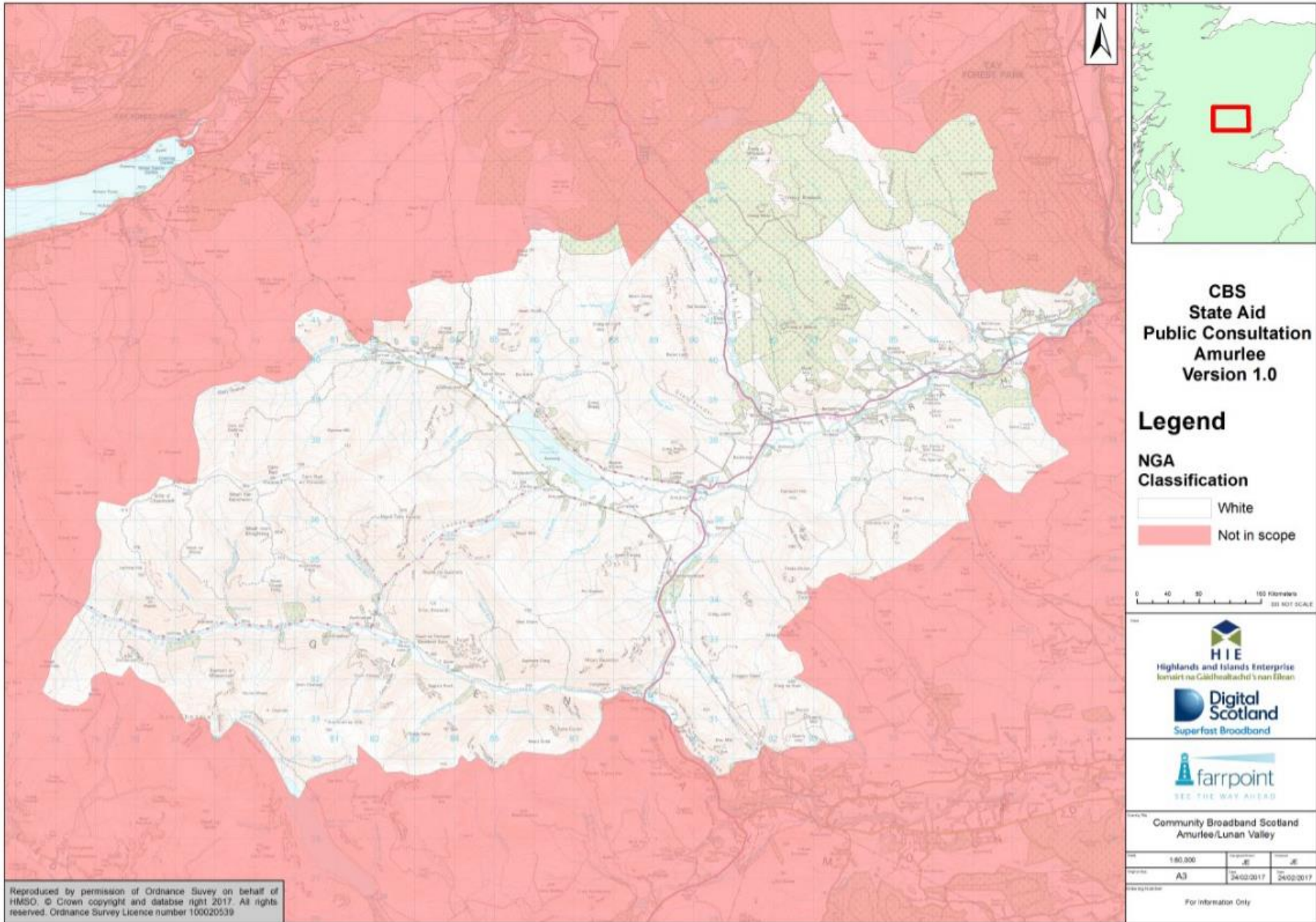
0 25 50 100 Kilometers  
00 001 SCALE

Community Broadband Scotland  
Aurulee/Lunan Valley

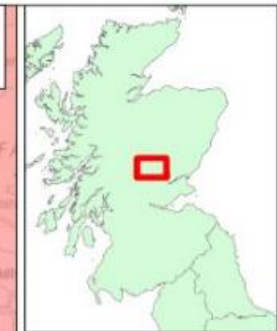
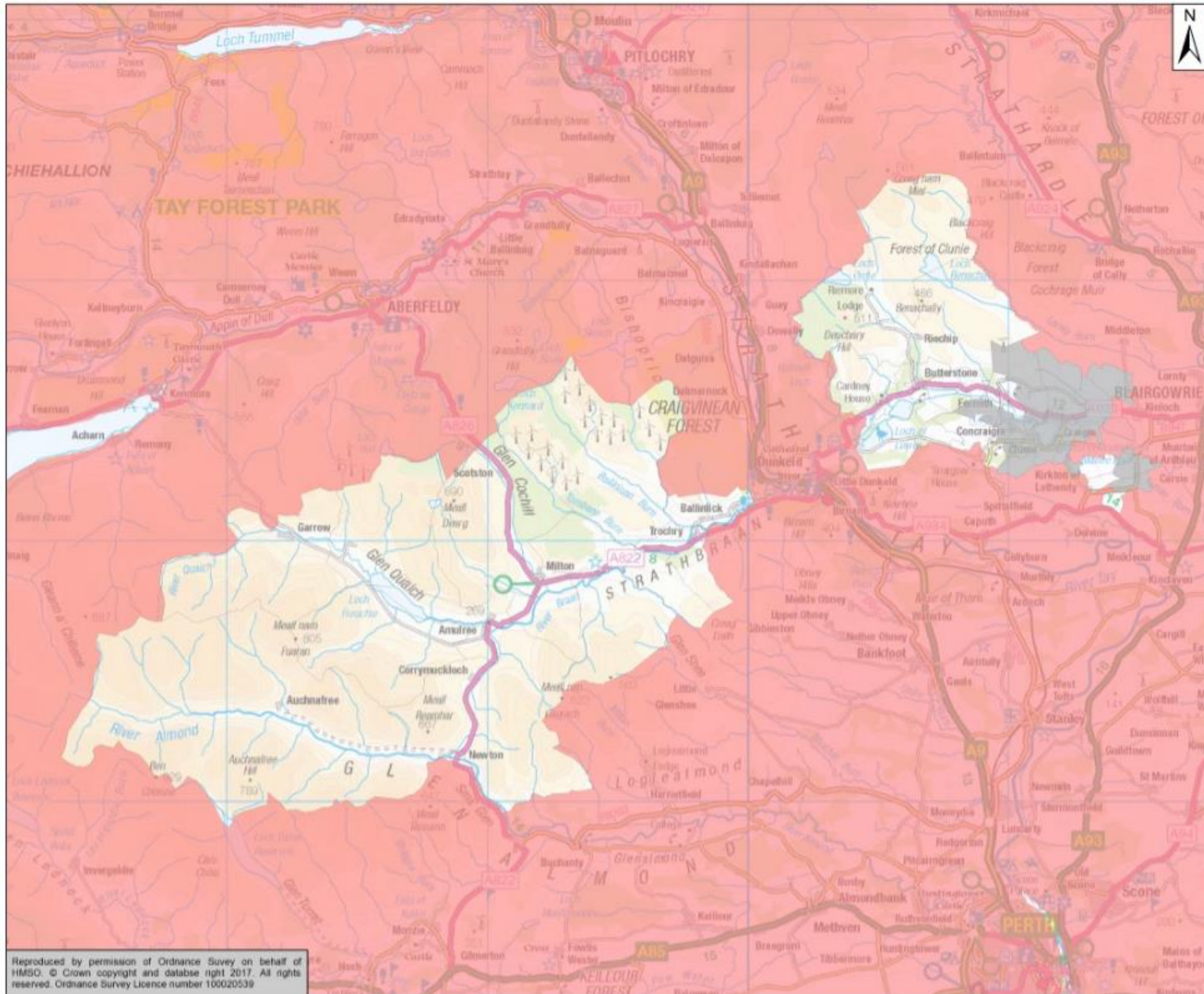
Scale	1:50,000	Version	1.0
Reference	A3	Date	24/02/2017
Registration		Date	24/02/2017

For information Only

Reproduced by permission of Ordnance Survey on behalf of HMSO. © Crown copyright and database right 2017. All rights reserved. Ordnance Survey Licence number 100020539







**CBS  
State Aid  
Public Consultation  
Lunan valley  
Version 1.0**

**Legend**

**Basic  
Broadband  
Classification**

-  Grey
-  White
-  Not in scope



Community Broadband Scotland  
Amurlee/Lunan Valley

Scale	1:132,024	Version	A3	Date	24/02/2017
Scale	A3	Version	24/02/2017	Date	24/02/2017
For Information Only					

Reproduced by permission of Ordnance Survey on behalf of HMGO. © Crown copyright and database right 2017. All rights reserved. Ordnance Survey Licence number 10020539

## **Appendix 2:**

**A full Public Consultation response template incorporating a spreadsheet with all of the premises within the proposed area will be released to providers once the attached Ordnance Survey One Scotland Mapping Agreement (OSMA) End User License contained in Appendix 3 has been signed and returned.**

## Appendix 3:

### Ordnance Survey One Scotland Mapping Agreement (OSMA) End User licence.



osma-eul-formfield.  
docx

**Please insert Organisation name and address in item 2, print, sign and witness and return two copies to:**

**Heather Smith  
Data Analyst  
Highlands and Islands Enterprise  
An Lòchran  
10 Inverness Campus  
Inverness  
IV2 5NA**

This is a requirement of the HIE license with Ordnance Survey in order to share the base data with suppliers. Please ensure that the relevant company details are provided in the Contractor license document before returning.

Organisations that have completed an Ordnance Survey One Scotland Mapping Agreement (OSMA) End User licence on a previous occasion should email CBS at [cbs-enquiries@hient.co.uk](mailto:cbs-enquiries@hient.co.uk) confirming a license is in place and requesting the base data. If contacting CBS by email or post please include the following in the subject field/ letter head: SAPC Ardross, Berwickshire, Cairngorms, Kinlochard, Locheilnet, Loch Tay, Lunan Valley, Mt Blair & Amulree, Marykirk, Trossachs

When returning the document or contacting CBS, please confirm the following:

- Your organisation's name (if applicable)
- Your organisation's address (if applicable)
- Your name
- Position
- Contact telephone number
- Email Address

This information will enable the prompt transmission of the Postcode/ premises lists for the proposed Community Broadband Project intervention area.