

# UNEMPLOYMENT DIGEST

## OCTOBER 2014

---

HIE Research and Economics Team

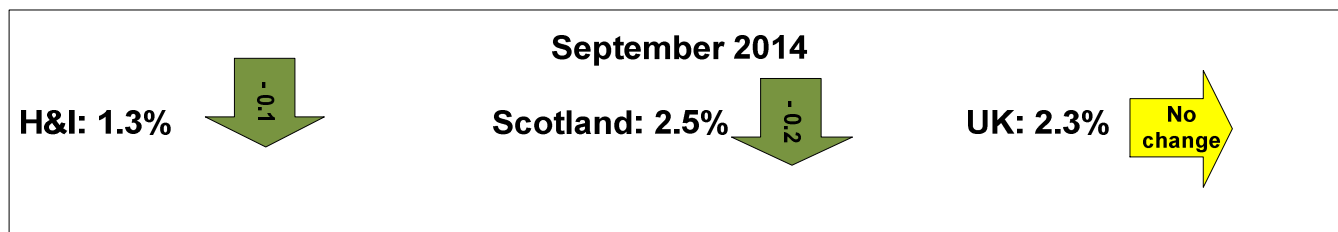


## UNEMPLOYMENT DIGEST

The Information contained in this report is based on Claimant Count figures. The Claimant Count measures the number of people claiming benefits principally for the reason of being unemployed. The Department for Work and Pensions (DWP) introduced a new benefit, Universal Credit, in April 2013. At present Universal Credit benefit is not included in the Claimant Count figures. Office for National Statistics (ONS) and DWP are working to include jobseeker Universal Credit claims in the Claimant Count as soon as possible.

The September 2014 claimant count unemployment figures\* were released on 15th October 2014.

As illustrated by the chart below, the Highlands and Islands continues to have significantly lower unemployment than either Scotland or the UK - a trend which has been fairly constant since the recession.

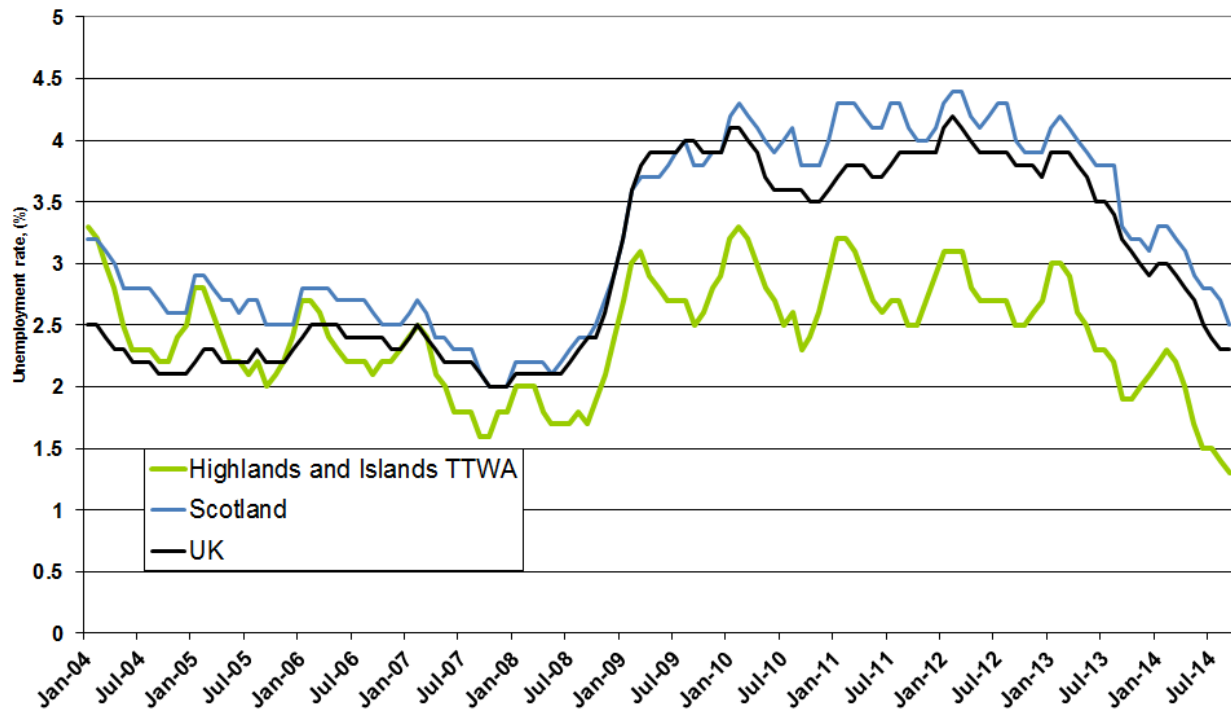


In September 2014, the average claimant count unemployment rate for the Travel to Work Areas (TTWAs) that comprise the Highlands and Islands was **1.3%**, which was below the rates for both Scotland (**2.5%**) and the UK (**2.3%**). The region's rate was lower than both the previous month and a year earlier (1.9% in September 2013).

The TTWAs whose rates exceeded the Scottish average in September 2014 were Wick (2.8%) and Dunoon & Bute (2.7%). Nine TTWAs in the Highlands and Islands had rates in September 2014 lower than 1.3% – Oban and Skye & Lochalsh (both with 1.1%), Lochaber (1.0%); Inverness and Dingwall (0.9%); Orkney Islands; Ullapool & Gairloch and Mull & Islay (all with 0.7%); Badenoch (0.6%) and Shetland Islands (0.5%).

The total number of people claiming unemployment benefit in the HIE area^ in September 2014 was 3,665. Out of the total, some 1,675 were long term unemployed\*\* and 710 were claimants aged 18-24.

Figure 1 - Unemployment in the Highlands and Islands, Scotland and the UK (2003-2014)



\* Based on Job Seekers Allowance (JSA) Claimant Count figures, produced monthly by ONS.

^ As defined by Scottish datazones.

\*\*1 For the purpose of this analysis, long-term unemployment (LTU) is defined as 'all those who have been unemployed and claiming benefit for over 6 months'.

Table 1 below illustrates the claimant count rates for each of the 18 TTWAs in the Highlands and Islands.

Table 1 - Unemployment by TTWA

Travel to Work Area	September 2014		August 2014	September 2013	Monthly change		Annual change	
	number	rate	rate	rate	number	rate	number	rate
Wick	215	2.8	3.1	3.9	-25	-0.3	-86	-1.1
Dunoon & Bute	329	2.7	3.1	3.9	-51	-0.4	-152	-1.2
Campbeltown	110	2.4	3.0	3.7	-25	-0.6	-56	-1.3
Eilean Siar	329	2.0	2.1	2.4	-20	-0.1	-82	-0.4
Invergordon	263	1.9	2.0	2.4	-17	-0.1	-76	-0.5
Thurso	172	1.8	2.1	2.5	-28	-0.3	-68	-0.7
Lochgilphead	86	1.5	1.7	2.4	-15	-0.2	-51	-0.9
Dornoch & Lairg	77	1.4	1.4	2.0	-5	0.0	-37	-0.6
Moray	742	1.3	1.5	1.6	-137	-0.2	-206	-0.3
Oban	118	1.1	1.2	2.0	-6	-0.1	-95	-0.9
Skye & Lochalsh	91	1.1	1.1	1.9	1	0.0	-60	-0.8
Lochaber	121	1.0	1.0	1.6	-9	0.0	-75	-0.6
Inverness & Dingwall	687	0.9	1.0	1.6	-84	-0.1	-554	-0.7
Orkney Islands	90	0.7	0.7	1.1	-4	0.0	-53	-0.4
Ullapool & Gairloch	38	0.7	0.7	1.2	0	0.0	-21	-0.5
Mull & Islay	32	0.7	0.6	1.1	4	0.1	-19	-0.4
Badenoch	48	0.6	0.7	1.1	-16	-0.1	-43	-0.5
Shetland Islands	71	0.5	0.5	0.8	-5	0.0	-49	-0.3
Highlands and Islands TTWA	3,619	1.3	1.4	1.9	-442	-0.1	-1,783	-0.6
Scotland	85,313	2.5	2.7	3.3	-8,727	-0.2	-30,889	-0.9
United Kingdom	923,240	2.3	2.3	3.2	-37,909	0.0	-401,485	-0.9

Table 2 shows the total claimant count unemployment, by number and rate over the month and year, long-term unemployment (LTU) and youth unemployment by HIE area office.

Table 2 - Unemployment by Area Office

HIE Area Office	Total Unemployment		Monthly change		Annual change		LTU	Youth Unemployment (18-24)
	number	rate*	number	%	number	%	number	number
Innse Gall	329	2.1	-20	-5.7	-82	-20.0	190	60
Caithness and Sutherland	479	2.0	-57	-10.6	-201	-29.6	265	115
Argyll and the Islands	721	1.7	-96	-11.8	-365	-33.6	365	145
Moray	742	1.3	-137	-15.6	-206	-21.7	270	170
Inner Moray Firth	998	1.1	-117	-10.5	-673	-40.3	415	150
Lochaber, Skye and Wester Ross	235	1.0	-9	-3.7	-146	-38.3	110	35
Orkney	90	0.7	-4	-4.3	-53	-37.1	35	25
Shetland	71	0.5	-5	-6.6	-49	-40.8	25	10

Research and Economics  
October 2014

Contact us at [hieresearch@hient.co.uk](mailto:hieresearch@hient.co.uk)

