

UNEMPLOYMENT DIGEST NOVEMBER 2014

HIE Research and Economics Team

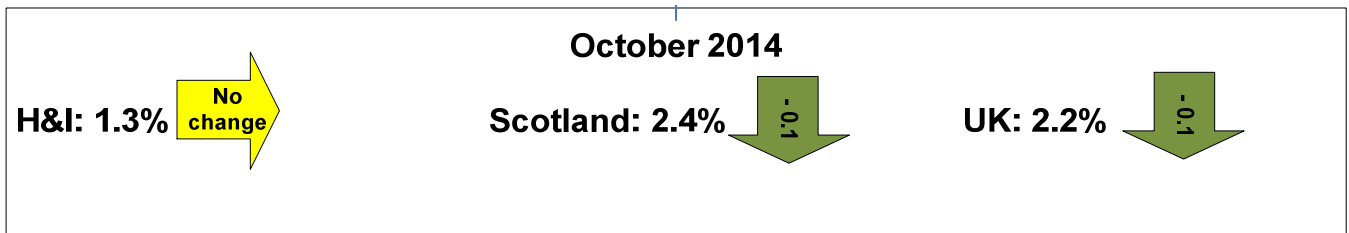


UNEMPLOYMENT DIGEST

The Information contained in this report is based on Claimant Count figures. The Claimant Count measures the number of people claiming benefits principally for the reason of being unemployed. The Department for Work and Pensions (DWP) introduced a new benefit, Universal Credit, in April 2013. At present Universal Credit benefit is not included in the Claimant Count figures. Office for National Statistics (ONS) and DWP are working to include jobseeker Universal Credit claims in the Claimant Count as soon as possible.

The October 2014 claimant count unemployment figures* were released on 12th November 2014.

As illustrated by the chart below, the Highlands and Islands continues to have significantly lower unemployment than either Scotland or the UK - a trend which has been fairly constant since the recession.

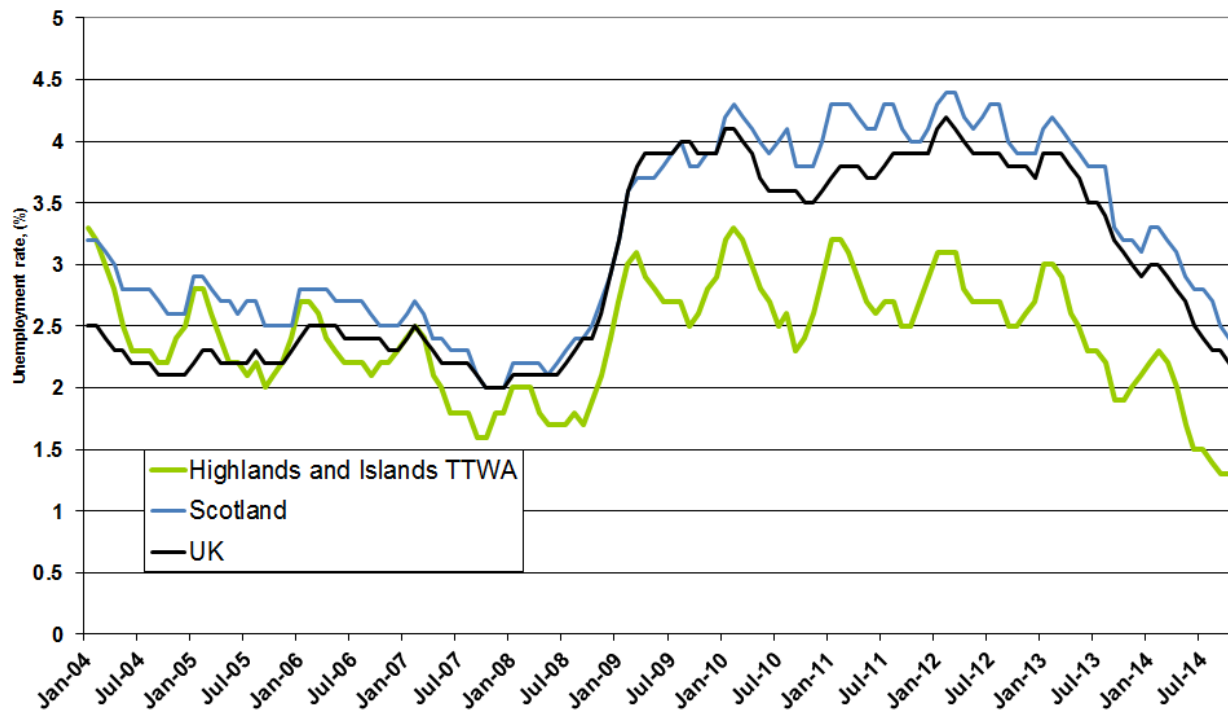


In October 2014, the average claimant count unemployment rate for the Travel to Work Areas (TTWAs) that comprise the Highlands and Islands was **1.3%**, which was below the rates for both Scotland (**2.4%**) and the UK (**2.2%**). The region's rate was the same as the previous month and lower than a year earlier (1.8% in October 2013).

The TTWAs whose rates exceeded the Scottish average in October 2014 were Wick (2.8%); Dunoon & Bute (2.6%) and Campbeltown (2.5%). Seven TTWAs in the Highlands and Islands had rates in October 2014 lower than 1.3% – Lochaber (1.0%); Inverness and Dingwall, Orkney Islands and Ullapool & Gairloch (all with 0.8%); Mull & Islay (0.7%); Badenoch and Shetland Islands (both with 0.6%).

The total number of people claiming unemployment benefit in the HIE area^ in October 2014 was 3,654. Out of the total, some 1,585 were long term unemployed** and 700 were claimants aged 18-24.

Figure 1 - Unemployment in the Highlands and Islands, Scotland and the UK (2004-2014)



* Based on Job Seekers Allowance (JSA) Claimant Count figures, produced monthly by ONS.

^ As defined by Scottish datazones.

**1 For the purpose of this analysis, long-term unemployment (LTU) is defined as 'all those who have been unemployed and claiming benefit for over 6 months'.

Table 1 below illustrates the claimant count rates for each of the 18 TTWAs in the Highlands and Islands.

Table 1 - Unemployment by TTWA

Travel to Work Area	October 2014		September 2014		October 2013		Monthly change		Annual change	
	number	rate	rate	rate	rate	number	rate	number	rate	
Wick	212	2.8	2.8	3.8	-3	0.0	-79	-1.0		
Dunoon & Bute	316	2.6	2.7	4.0	-13	-0.1	-169	-1.4		
Campbeltown	114	2.5	2.4	4.0	4	0.1	-68	-1.5		
Eilean Siar	326	1.9	2.0	2.6	-3	-0.1	-103	-0.7		
Invergordon	251	1.8	1.9	2.1	-12	-0.1	-40	-0.3		
Thurso	171	1.8	1.8	2.5	-1	0.0	-66	-0.7		
Lochgilphead	94	1.6	1.5	2.4	8	0.1	-47	-0.8		
Dornoch & Lairg	85	1.5	1.4	2.0	8	0.1	-28	-0.5		
Moray	735	1.3	1.3	1.6	-7	0.0	-180	-0.3		
Oban	134	1.3	1.1	2.0	16	0.2	-76	-0.7		
Skye & Lochalsh	103	1.3	1.1	2.0	12	0.2	-63	-0.7		
Lochaber	128	1.0	1.0	1.6	7	0.0	-67	-0.6		
Inverness & Dingwall	626	0.8	0.9	1.5	-61	-0.1	-547	-0.7		
Orkney Islands	105	0.8	0.7	1.1	15	0.1	-40	-0.3		
Ullapool & Gairloch	39	0.8	0.7	1.5	1	0.1	-36	-0.7		
Mull & Islay	30	0.7	0.7	1.2	-2	0.0	-25	-0.5		
Badenoch	53	0.6	0.6	1.2	5	0.0	-46	-0.6		
Shetland Islands	83	0.6	0.5	0.7	12	0.1	-27	-0.1		
Highlands and Islands TTWA	3,605	1.3	1.3	1.8	-14	0.0	-1,707	-0.5		
Scotland	82,719	2.4	2.5	3.2	-2,594	-0.1	-28,853	-0.8		
United Kingdom	887,771	2.2	2.3	3.1	-35,469	-0.1	-380,980	-0.9		

Table 2 shows the total claimant count unemployment, by number and rate over the month and year, long-term unemployment (LTU) and youth unemployment by HIE area office.

Table 2 - Unemployment by Area Office

HIE Area Office	Total Unemployment		Monthly change		Annual change		LTU	Youth Unemployment (18-24)
	number	rate*	number	%	number	%	number	number
Caithness and Sutherland	483	2.1	4	0.8	-188	-28.0	260	110
Innse Gall	326	2.0	-3	-0.9	-103	-24.0	180	50
Argyll and the Islands	737	1.7	16	2.2	-385	-34.3	350	150
Moray	735	1.3	-7	-0.9	-180	-19.7	255	170
Lochaber, Skye and Wester Ross	255	1.1	20	8.5	-151	-37.2	105	40
Inner Moray Firth	930	1.0	-68	-6.8	-633	-40.5	380	130
Orkney	105	0.8	15	16.7	-40	-27.6	35	30
Shetland	83	0.6	12	16.9	-27	-24.5	20	20

Research and Economics
November 2014

Contact us at hieresearch@hient.co.uk

