

UNEMPLOYMENT DIGEST

JULY 2015

HIE Research and Economics Team

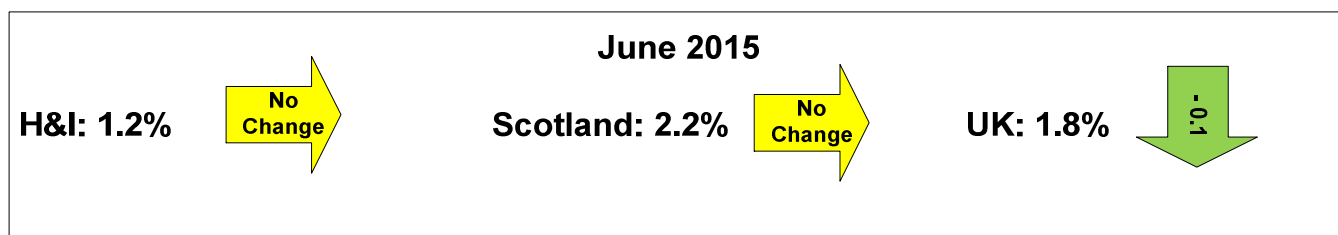


UNEMPLOYMENT DIGEST

The Information contained in this report is based on Claimant Count figures. The Claimant Count measures the number of people claiming benefits principally for the reason of being unemployed. The Department for Work and Pensions (DWP) introduced a new benefit, Universal Credit, in April 2013. At present Universal Credit benefit is not included in the Claimant Count figures. Office for National Statistics (ONS) and DWP are working to include jobseeker Universal Credit claims in the Claimant Count as soon as possible.

The June 2015 claimant count unemployment figures* were released on 15th July 2015.

As illustrated by the chart below, the Highlands and Islands continues to have significantly lower unemployment than either Scotland or the UK - a trend which has been fairly constant since the recession.

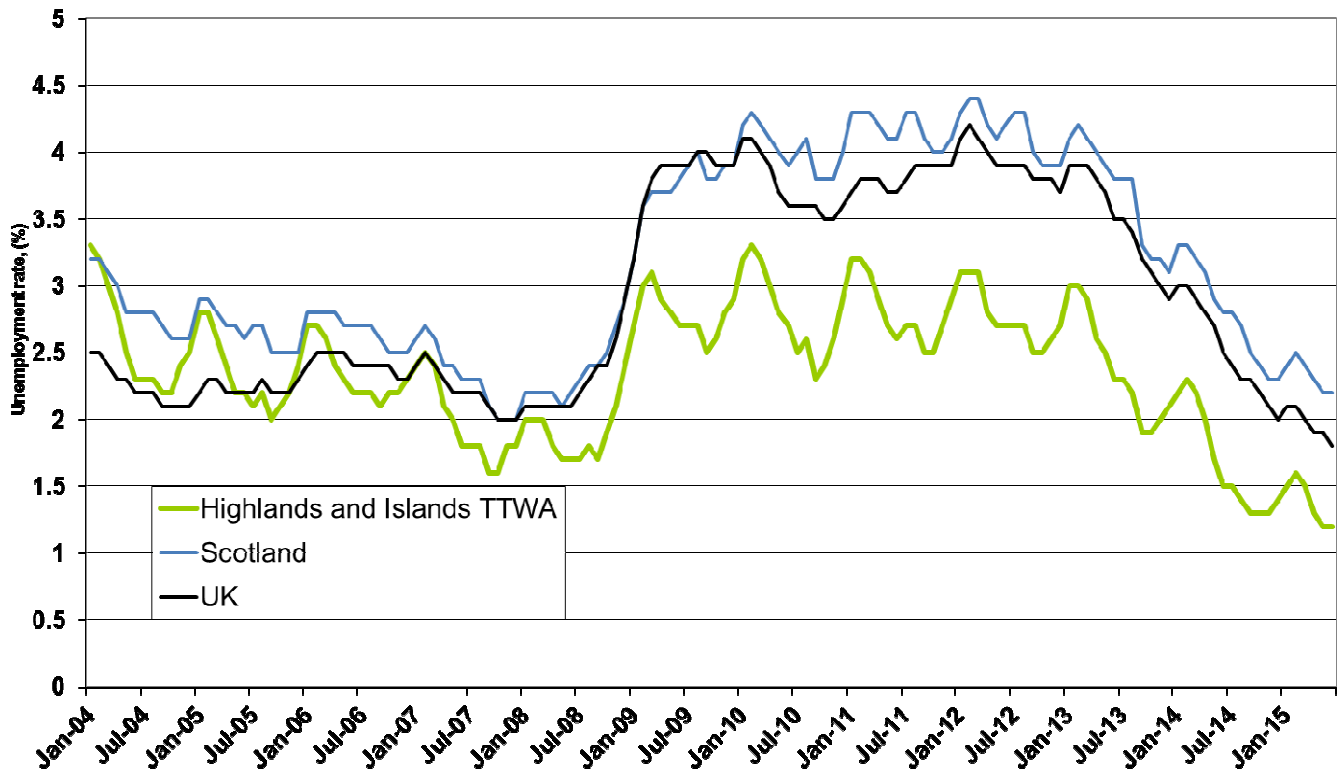


In June 2015, the average claimant count unemployment rate for the Travel to Work Areas (TTWAs) that comprise the Highlands and Islands was **1.2%**, which was below the rates for both Scotland (**2.2%**) and the UK (**1.8%**). The region's rate was the same as in the previous month, but lower than that of a year earlier (1.5% in June 2014).

The TTWAs whose rates exceeded the Scottish average in June 2015 were Dunoon & Bute and Campbeltown (both with 2.3%). Nine TTWAs in the Highlands and Islands had rates in June 2015 lower than 1.2% – Oban (1.0%); Skye & Lochalsh and Lochaber (both with 0.8%); Ullapool & Gairloch, Mull & Islay and Inverness & Dingwall (all 0.7%); Shetland Islands and Badenoch (both with 0.5%) and Orkney Islands (0.4%).

The total number of people claiming unemployment benefit in the HIE area[^] in June 2015 was 3,368. Out of the total, some 1,525 were long term unemployed** and 575 were claimants aged 18-24.

Figure 1 - Unemployment in the Highlands and Islands, Scotland and the UK (2004-2015)



* Based on Job Seekers Allowance (JSA) Claimant Count figures, produced monthly by ONS.

^ As defined by Scottish datazones.

**1 For the purpose of this analysis, long-term unemployment (LTU) is defined as 'all those who have been unemployed and claiming benefit for over 6 months'.

Table 1 below illustrates the claimant count rates for each of the 18 TTWAs in the Highlands and Islands.

Table 1 - Unemployment by TTWA

Travel to Work Area	June 2015		May 2015	June 2014	Monthly change		Annual change	
	number	rate	rate	rate	number	rate	number	rate
Dunoon & Bute	286	2.3	2.4	3.3	-7	-0.1	-117	-1.0
Campbeltown	106	2.3	2.3	2.9	1	0.0	-27	-0.6
Wick	167	2.2	2.2	3.4	-4	0.0	-90	-1.2
Eilean Siar	338	2.0	2.1	2.2	-13	-0.1	-26	-0.2
Invergordon	243	1.8	1.8	2.6	-11	0.0	-114	-0.8
Thurso	169	1.8	1.8	2.2	-1	0.0	-45	-0.4
Lochgilphead	79	1.4	1.4	1.5	-3	0.0	-9	-0.1
Moray	794	1.4	1.3	1.6	22	0.1	-138	-0.2
Dornoch & Lairg	75	1.3	1.4	1.5	-6	-0.1	-12	-0.2
Oban	105	1.0	1.1	1.3	-9	-0.1	-35	-0.3
Skye & Lochalsh	69	0.8	1.0	1.3	-14	-0.2	-36	-0.5
Lochaber	102	0.8	0.9	1.2	-12	-0.1	-51	-0.4
Ullapool & Gairloch	34	0.7	0.7	0.8	-1	0.0	-7	-0.1
Mull & Islay	30	0.7	0.7	0.7	-3	0.0	-3	0.0
Inverness & Dingwall	548	0.7	0.7	1.1	-11	0.0	-312	-0.4
Shetland Islands	80	0.5	0.6	0.7	-6	-0.1	-23	-0.2
Badenoch	44	0.5	0.5	0.8	-3	0.0	-26	-0.3
Orkney Islands	54	0.4	0.5	0.8	-16	-0.1	-53	-0.4
Highlands and Islands TTWA	3,323	1.2	1.2	1.5	-97	0.0	-1,124	-0.3
Scotland	75,249	2.2	2.2	2.8	-2,239	0.0	-21,826	-0.6
United Kingdom	733,971	1.8	1.9	2.5	-27,991	-0.1	-286,319	-0.7

Table 2 shows the total claimant count unemployment, by number and rate over the month and year, long-term unemployment (LTU) and youth unemployment by HIE area office.

Table 2 - Unemployment by Area Office

HIE Area Office	Total Unemployment		Monthly change		Annual change		LTU	Youth Unemployment (18-24)
	number	rate*	number	%	number	%	number	number
Innse Gall	338	2.1	-13	-3.7	-26	-7.1	185	50
Caithness and Sutherland	425	1.8	-9	-2.1	-151	-26.2	270	70
Argyll and the Islands	651	1.5	-27	-4.0	-190	-22.6	325	120
Moray	794	1.4	22	2.8	-138	-14.8	255	180
Inner Moray Firth	835	0.9	-25	-2.9	-452	-35.1	335	115
Lochaber, Skye and Wester Ross	191	0.8	-29	-13.2	-90	-32.0	110	15
Shetland	80	0.6	-6	-7.0	-23	-22.3	15	10
Orkney	54	0.4	-16	-22.9	-53	-49.5	30	15

Research and Economics
July 2015

Contact us at hieresearch@hient.co.uk

